

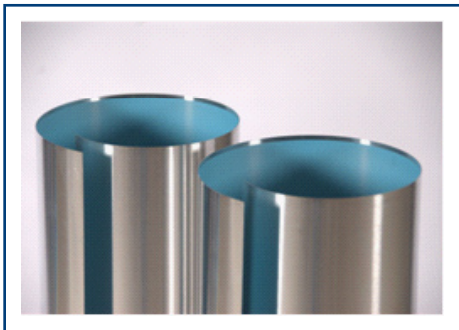
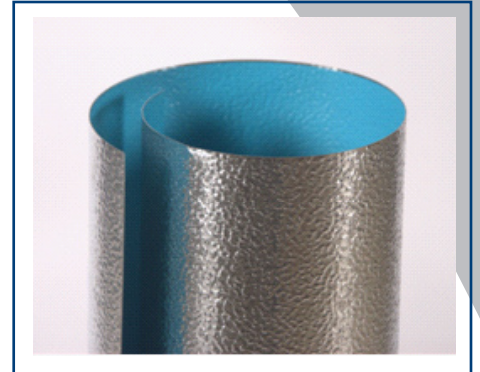


## Product Information

# Aluminum Roll Jacketing with Polysurlyn Moisture Retarder

### Product Description

Ideal Products' Aluminum Roll Jacketing with Polysurlyn Moisture Retarder is made from 3003 and 3105 Series Aluminum, conforming to ASTM B-209 standards. The interior of this product is lined with a 3 mil thick co-extruded Surlyn and Polyethylene moisture retarder. This film is laminated to the aluminum sheet by a process of heat and pressure. The exterior of Polysurlyn Aluminum Jacketing is a bare mill finish.



Polysurlyn Moisture Retarder provides an excellent resistance to moisture and has excellent abrasion resistance during installation.

Polysurlyn Moisture Retarder Aluminum Jacketing is available in smooth, stucco embossed or 3/16" corrugation (cross crimped) finishes, and in 0.016", 0.020", 0.024" and 0.032" thicknesses.

### Product Application

- |                |  |
|----------------|--|
| 0.016" (0.4mm) | Recommended on pipelines up to 24" O.D., including insulation. Used to protect piping, vessels, and tanks which are less than 8 feet in diameter.            |
| 0.020" (0.5mm) | Recommended on pipelines up to 36" O.D., including insulation. Used to protect towers, vessels, and tanks with a diameter greater than 8 feet.               |
| 0.024" (0.6mm) | This heavier gauge is used where extra strength and protection is required. Used to protect larger diameter pipelines, towers, vessels, tanks and equipment. |
| 0.032" (0.8mm) | For areas where extra heavy protection is required, or in custom fabrication of box covers, tank heads, or heavy wear areas.                                 |

Surlyn® is a trade mark of the DuPont Company



## Product Information Aluminum Numbered WeatherJacs®

### Product Description

Ideal Products' Aluminum Numbered WeatherJacs® are produced from 1100 series aluminum, .024" in thickness, meeting ASTM C-585 standards. All of our aluminum numbered WeatherJacs® are coated on the interior and exterior with a heat cured acrylic enamel moisture barrier. The interior covering helps provide moisture and corrosion resistance to the alloy, while the exterior clear coat helps provide protection against oxidation and corrosion, to maintain protection and finish.



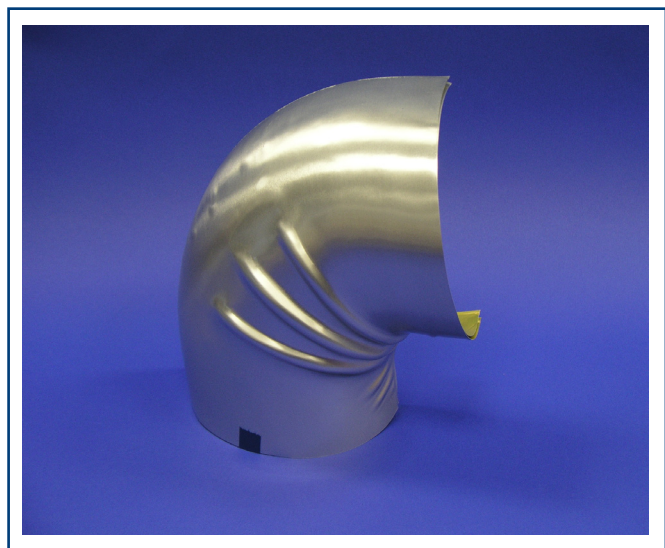
Our Aluminum Numbered WeatherJacs® are made from two matching halves, and when fastened together they form a precise fit every time. Each half has a plastic weather proof label attached on the inside, identifying the size number of the elbow for easy identification.

Ideal offers a selection of Aluminum Numbered WeatherJacs® in both 90° and 45° angles, in sizes from #2 - #61 (for 90°) and #1 - #16 (for 45°). We also offer a selection of Large Bore WeatherJacs® and Gore Elbow Covers for your larger pipe or custom needs.

### Product Application

Aluminum Numbered WeatherJacs® should be installed at any angle or bends in a pipe line, over the Aluminum Roll Jacketing. When used along with Ideal Products' Roll Jacket covering it provides complete protection to any work project.

WeatherJacs® can be secured by strapping, stainless steel screws or rivets. The amount of straps, screws or rivets, is dependant on the size of the elbow. When fastening with screws or rivets, the exterior and interior center points should be started first, then working outwards towards the two ends. It is recommended that a joint sealant be used on all overlaps when installing WeatherJacs®.



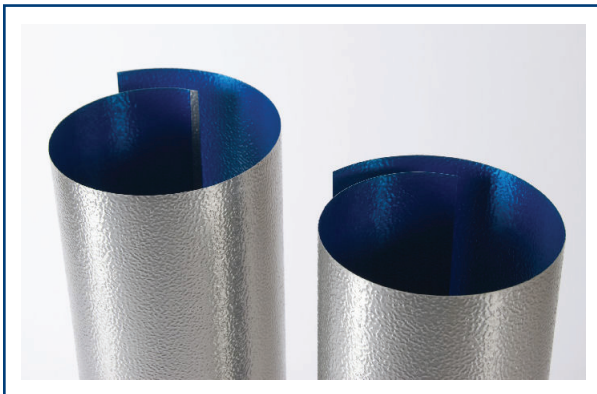
## Product Information

# Aluminum Roll Jacketing With Painted Moisture Retarder

### Product Description

Ideal Products' Aluminum Roll Jacketing is produced from 3003 and 3105 series aluminum, meeting ASTM B-209 standards. Both the interior and exterior of this product has a hard film of heat cured acrylic enamel for durable corrosion protection of pipes, tanks and vessels. The exterior clear finish helps in the prevention of oxidation and resists the dulling of the aluminum, while the

interior finish provides a highly effective moisture retarder.



Painted Moisture Retarder Aluminum Jacketing is available in smooth, stucco embossed or 3/16" corrugation (cross crimped) finishes, and in 0.016", 0.020", 0.024" and 0.032" thicknesses.

### Product Application

- |                |  |
|----------------|--|
| 0.016" (0.4mm) | Recommended on pipelines up to 24" O.D., including insulation. Used to protect piping, vessels, and tanks which are less than 8 feet in diameter.            |
| 0.020" (0.5mm) | Recommended on pipelines up to 36" O.D., including insulation. Used to protect towers, vessels, and tanks with a diameter greater than 8 feet.               |
| 0.024" (0.6mm) | This heavier gauge is used where extra strength and protection is required. Used to protect larger diameter pipelines, towers, vessels, tanks and equipment. |
| 0.032" (0.8mm) | For areas where extra heavy protection is required, or in custom fabrication of box covers, tank heads, or heavy wear areas.                                 |

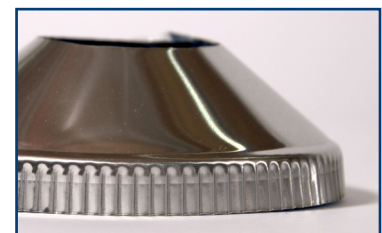
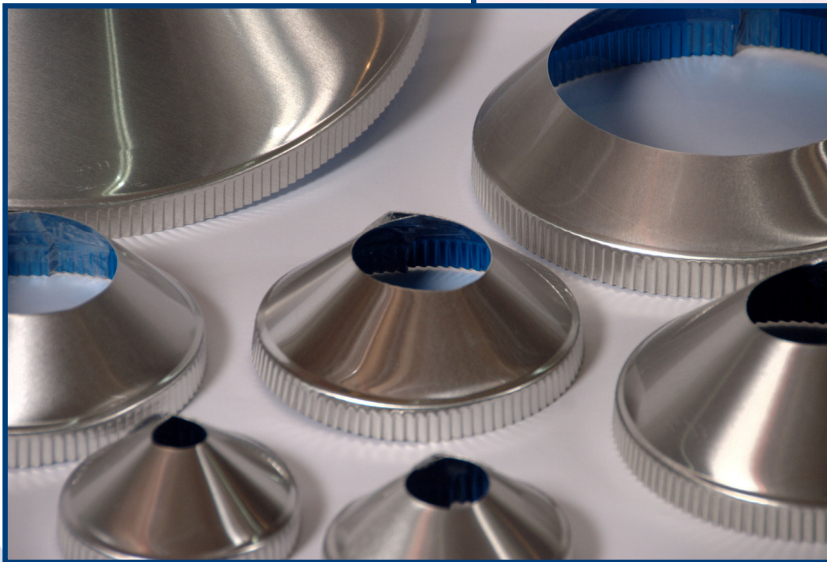


## Product Information Precision Cut Bevels

### Product Description

**Ideal Products** is able to custom fabricate Precision Cut Bevels on our in-house CNC Cutting Equipment. This pre-fabrication saves time, labour and waste material by eliminating the need for on site fabrication.

Ideal Products manufactures Bevels to be used when pipe size and/or insulation change. Ideal's Precision Cut Bevels are one piece cut and crimped. The bevelled collars are available in sizes #1 to #32. Iron pipe size and insulation thickness is requested when ordering.



© 2010 Ideal Products of Canada Ltd.

715 - 76 Avenue  
Edmonton AB T6P1P2  
p: (780)456-3286 f: (780)456-8808  
tf: 1-800-299-0819 tf fax: 1-866-260-8808

[www.idealproducts.ca](http://www.idealproducts.ca)

870 Arvin Avenue, Unit #1  
Stoney Creek ON L8E 5P2  
p: (905)643-2543 f: (905)643-9851



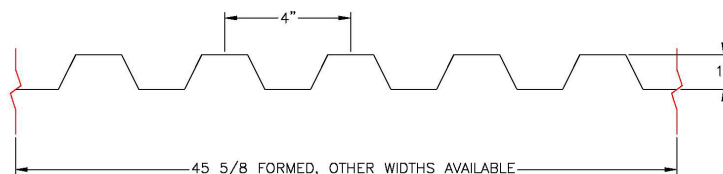
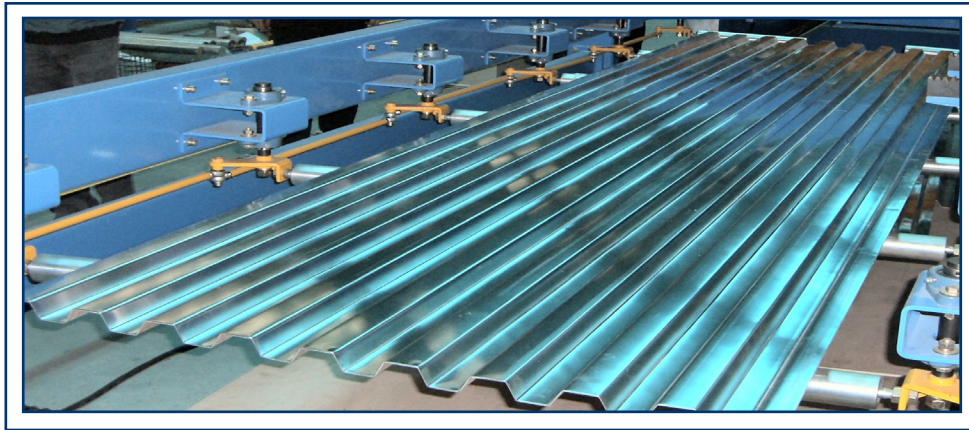
## Product Information Box Rib Sheets (4 x 1)

### Product Description

Ideal's Box Rib is engineered for maximum structural stiffness with continuous 1" high ribs on 4" centres. Sheets will be fabricated to order with standard lengths up to 26 feet. Longer sheet lengths available on custom order.

Stucco Embossed and Smooth finishes available.

Box Rib is available in Aluminum of .032 and .040 and .050 thickness in both clad and non-clad. Stainless Steel and other alloys are available upon request, as well as Kynar® Painted Aluminum. Closure Strips available as well.



Kynar® is registered trademark of Arkema Inc.

© 2010 Ideal Products of Canada Ltd.

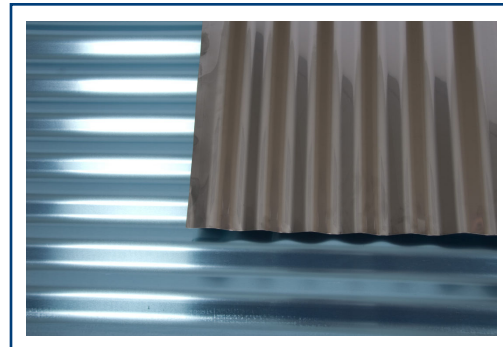
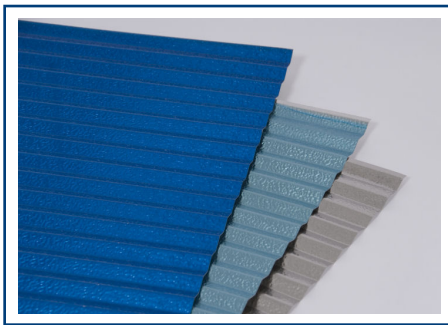
715 - 76 Avenue  
Edmonton AB T6P1P2  
p: (780)456-3286 f: (780)456-8808  
tf: 1-800-299-0819 tf fax: 1-866-260-8808

870 Arvin Avenue, Unit #1  
Stoney Creek ON L8E 5P2  
p: (905)643-2543 f: (905)643-9851

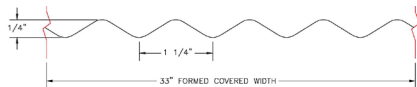
[www.idealproducts.ca](http://www.idealproducts.ca)

## Product Description

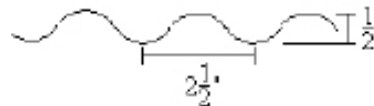
Ideal Products offers Deep Corrugated Sheets made from Aluminum, Stainless Steel and Aluminum Painted Moisture Retarder with Polysurlyn. They are available in 1 ¼" by ¼" deep and 2 ½" by ½" deep profiles, with a smooth or stucco embossed finish. The Aluminum and Stainless Steel used to produce our Deep Corrugated Sheets meet ASTM B-209 standard (for Aluminum) and ASTM A-240 Standard (for Stainless Steel).



1 ¼" Deep Corrugated



2 ½" Deep Corrugated



	<b>Thickness</b>	<b>Recommended Profile</b>
<b>Aluminum</b>	0.016"	1 ¼"
	0.020"	1 ¼" / 2 ½"
	0.024"	2 ½"
	0.032"	2 ½"
<b>Stainless Steel</b>	0.010"	1 ¼"
	0.016"	1 ¼" / 2 ½"
	0.020"	2 ½"

All sheets are available in either a smooth or stucco embossed finish. Our Deep Corrugated Sheets come in a standard width of 33" wide with no length restriction.

## Product Application

Deep Corrugated Sheets are designed for the protection and weather proofing of vessels and tanks. It can also be used to protect equipment and insulation in abusive areas. Both Aluminum and Stainless Steel are offered in multiple gauges and profiles. It is important to identify the type of environment that the project is being done in, to ensure the material and gauge are properly selected.

### Product Description

**Ideal Products** is able to custom fabricate Precision Cut End Caps on our in-house CNC Cutting Equipment. This pre-fabrication saves time, labour and waste material by eliminating the need for on site fabrication.



Ideal's Precision Cut End Caps will be manufactured as two piece cut and crimped and are suggested to be used when Ideal's PrecisionFit Pressed Endcaps are not suitable.



### Product Description

**Ideal Products** now manufactures PrecisionFit Pressed one piece End Caps available in Sizes #1 through to #24. These End Caps are produced using 1100 series 0.024 painted aluminum, the same aluminum used in Ideal's pressed elbows.

*PrecisionFit* Pressed End Caps are stocked and available from Ideal's Warehouses in Edmonton, Alberta; Stoney Creek, Ontario; and Indianapolis, Indiana.

#### **Advantages:**

- 1 piece, sliced for easy cutting and installation;
- Significant labour and material cost savings;
- No need for on site fabrication
- Designed for multi-fit sizing with each separate size End Cap;
- Multi-fit sizing markings are debossed into each End Cap for ease of installation.



All other endcap sizes are available from Ideal Products, but will be manufactured as two piece precision cut and crimped.

### Product Application

Ideal's *PrecisionFit* Pressed End Caps are extremely easy to install, saving considerable time and money.

During the pressing process, all *PrecisionFit* End Caps are pre-marked with cut out lines and sizing for various sizes of pipe and insulation. The *PrecisionFit* End Caps have an extended collar that is flat for ease of installation. The centre points are marked for ease of offset cutting and therefore producing a superior clean finished look.

**Ideal Products'** *PrecisionFit* end caps will be shipped to the customer being cut all the way through except for one edge keeping the piece joined. This allows a simple overlap of one edge of the cap until the scribe lines come together and line up. There is the alternate choice to cut the End Cap into two pieces and overlap both sides.

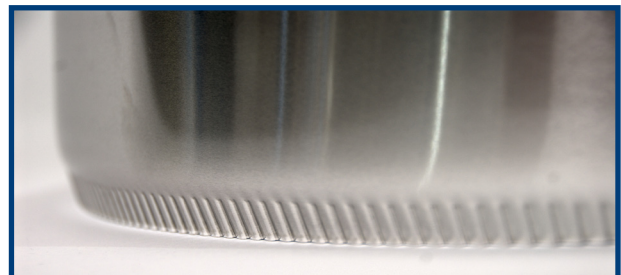


### Product Description

**Ideal Products** is able to custom fabricate Precision Cut Gores on our in-house CNC Cutting Equipment. This pre-fabrication saves time, labour and waste material by eliminating the need for on site fabrication.

Ideal's Precision Cut Gores are custom fabricated sections made to cover and weatherproof those 90° and 45° elbows that are larger than the maximum size of Ideal's two piece PrecisionFit Elbows. Gores can be manufactured from both Aluminum and Stainless Steel. All of Ideal's Precision Cut Gores are manufactured to ASTM C-450, and sizes are labelled for easy identification. Specific pipe size and insulation thickness information are required when ordering as well as the radius of the gore required.

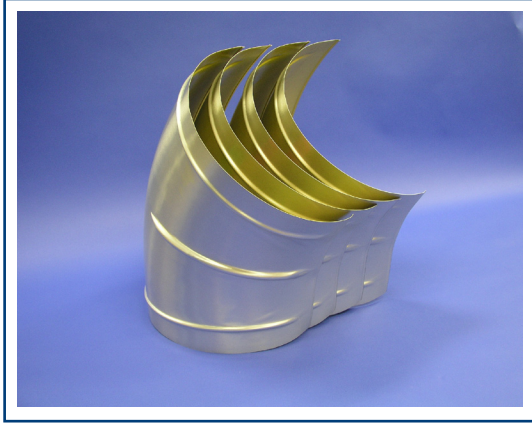
Our standard Gores are supplied in 90° and 45° for standard long radius and short radius elbows. Ideal is also able to manufacturer 2D, 3D, 5D and 10D sweeps. Custom radius and angles are available for pricing upon request.





## Product Information

# Large Bore Pressed WeatherJacs®



### **Patented Weather Tight System**

Water is the enemy to any insulation system. Patented inside and outside beads prevent water from entering the insulation system. See chart on attached sheet.

### **Precision Formed**

WeatherJacs® are precision-formed in a state of the art, computer controlled hydraulic press.

### **Moisture Barrier**

A moisture barrier is applied to the interior of all WeatherJacs® for resistance to electrolyte decomposition.

### **Corrosion Protection**

A clear acrylic coating is applied to the exterior of all WeatherJacs®.

### **Various Applications**

Can be applied over Long Radius Butt Weld, Socket Weld, and Screwed Pipe Elbows from 1/2" through 31" IPS.

### **Ease of Installation**

Alignment ribs allow for easy installation. Fewer pieces than gores allow for quicker and easier installation.

### **Better Protection**

The use of extended laps and two patented water barrier systems provides a far superior seal over traditional gored elbows.

WeatherJacs® is a registered Trademark of Ideal Products of America LP

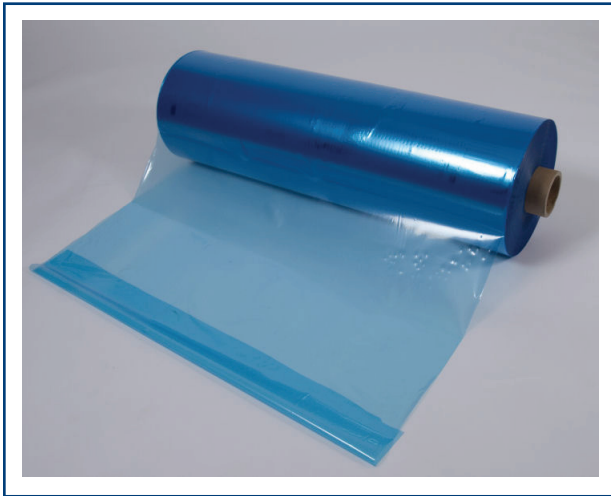
© 2008 Ideal Products of Canada Ltd.

715 - 76 Avenue  
Edmonton AB T6P1P2  
p: (780)456-3286 f: (780)456-8808

[www.idealproducts.ca](http://www.idealproducts.ca)

870 Arvin Avenue, Unit #1  
Stoney Creek ON L8E 5P2  
p: (905)643-2543 f: (905)643-9851

### Product Description



Polysurlyn Moisture Retarder is a co-extruded film of DuPont's Surlyn and Polyethylene. It is a 3 mil thick moisture barrier that is replacing the industry standard Polykraft.

Polysurlyn Moisture Retarder is laminated to the inside of Ideal's Aluminum and Stainless Steel using a process of pressure and heat.

Polysurlyn Moisture Retarder offers superior resistance to moisture protection over Polykraft paper. It also provides good abrasion resistance during the installation process.

### Physical Characteristics

#### **Water Vapor Transmission Rate ( WVTR )**

WVTR + 0.21 grams per 100 square inches per day

#### **Polyethylene**

Melting Point 270° F

Auto Ignition 650° F

#### **Surlyn Film**

Melting Point 212° F

Decomposition Temp 617° F

Surlyn® is a trademark of the DuPont Company.

### Product Description

Ideal Products supplies Stainless Steel Elbow Covers produced from T-304 and T-316 Stainless Steel, conforming to ASTM C-450/ ASTM C-585 standards. All of Ideal's Stainless Steel Elbows are of a 2B mill finish, matching the finish of our Stainless Roll Jacketing.

Ideal offers a selection of sizes of Stainless Steel Elbows in both 90° and 45° angles, in sizes from #2 - #56 (for 90°) and #1 - #15 (for 45°). We also offer a selection of Gore Elbow Covers for larger pipes or custom work.



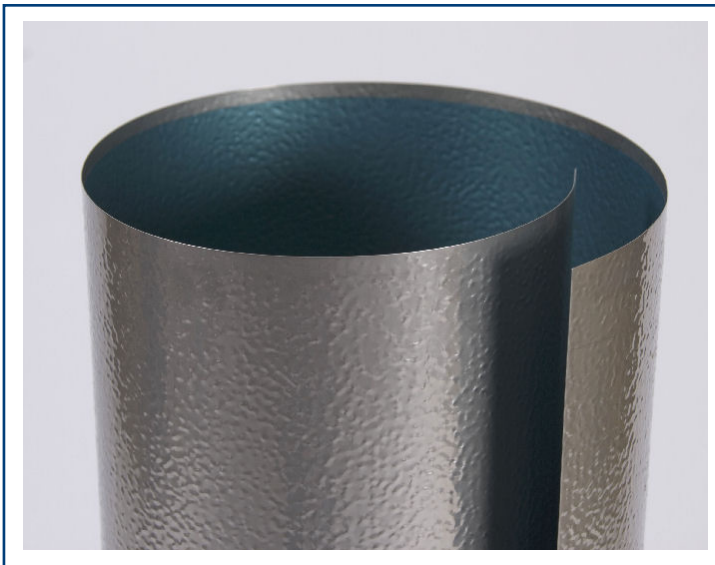
### Product Application

Stainless Steel Elbows should be used at any angle or bend in a pipe line, over the Roll Jacketing. When used with Ideal Products' Stainless Steel Roll Jacketing, it provides maximum protection where corrosion and abuse is a factor. It is also ideal for areas of high temperatures.

## Product Information

# Stainless Steel Roll Jacketing with Polysurlyn Moisture Retarder

### Product Description



Ideal Products' Stainless Steel Jacketing with Polysurlyn Moisture Retarder is produced from T-304 and T-316 stainless steel, meeting ASTM A-240 standards. The interior of this product is lined with a 3 mil thick co-extruded Surlyn and Polyethylene moisture retarder. This film is laminated to the stainless steel by a process of heat and pressure. The exterior of the Polysurlyn Stainless Steel is a 2B mill finish.

Polysurlyn Moisture Retarder provides an excellent resistance to moisture and has excellent abrasion resistance during installation.

Polysurlyn Moisture Retarder Stainless Steel Roll Jacketing is available in smooth, stucco embossed or 3/16" corrugation (cross crimped) finishes, and in 0.010" (.025mm), 0.016" (0.4mm), 0.020" (0.5mm), 0.024" (0.6mm) thicknesses. Stainless Steel Jacketing in itself, has extensive corrosion resistive properties and a high resistance to heat. Ideal Products' Stainless Steel Roll Jacketing with Polysurlyn Moisture Retarder has a soft-annealed temper, making it easy to handle and fabricate.

### **Melting Temperatures**

T-304 Stainless Steel    2550° F - 2650° F  
   1399° C - 1454° C

T-316 Stainless Steel    2500° F - 2550° F  
   1371° C - 1399° C

### Product Application

Stainless Steel Roll Jacketing with Polysurlyn is used in areas where extra protection from corrosion and abuse is a factor. It is used in refineries, plants and mills to protect pipes, vessels and tanks where chemical attack is a problem. It can also be used in areas where high temperatures are or could be an issue.

### Product Description

Ideal Products' Stainless Steel Jacketing is produced from T-304 and T-316 stainless steel, meeting ASTM A-240 standards. Stainless Steel Roll Jacketing is available in smooth, stucco embossed or 3/16" corrugation (cross crimped) finishes, and 0.010", 0.016", 0.020", 0.024" thicknesses with a 2B mill finish. Stainless Steel Jacketing has extensive corrosion resistive properties and a high resistance to heat. Ideal Products' Stainless Steel Roll Jacketing has a soft-annealed temper, making it easy to handle and fabricate.



### Melting Temperatures

T-304 Stainless Steel      2550° F - 2650° F  
    1399° C - 1454° C

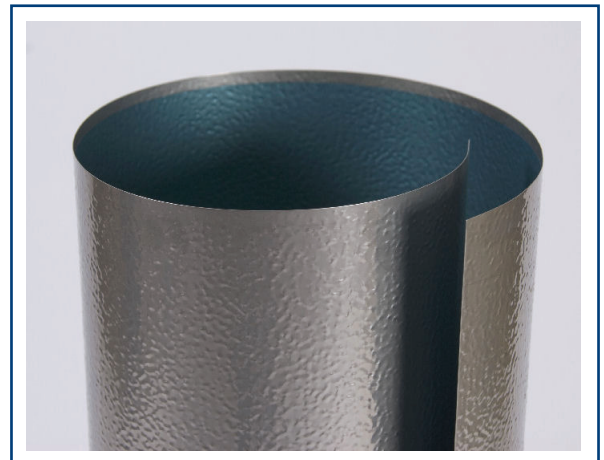
T-316 Stainless Steel      2500° F - 2550° F  
    1371° C - 1399° C

### Product Application

Stainless Steel Roll Jacketing is used in areas where extra protection from corrosion and abuse is a factor. It is used in refineries, plants and mills to protect pipes, vessels and tanks where chemical attack is a problem. It can also be used in areas where high temperatures are or could be an issue.

Stainless Steel Jacketing is recommended for use in the following:

- Areas that require a higher degree of protection from corrosion
- Areas that require a higher degree of fire protection
- Areas that require a higher degree of protection from abuse
  - freezers
  - food processing plants
- Paper mills



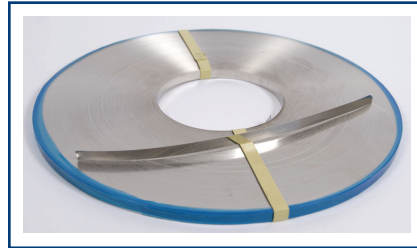
### Stainless Steel Strapping

Ideal Products' Stainless Steel strapping is made from T-304 Series Stainless Steel, which meets ASTM A-240 standards. Ideal Products' strapping is manufactured from a soft annealing, making it easy to handle. It is available in both 1/2" and 3/4" widths and in 0.015" and 0.020" thicknesses. Ideal Products has "No Asbestos" engraved strapping to help identify asbestos free insulation areas. Asbestor free banding is stocked in 1/2" width by 0.020" thickness.

1/2" Strapping 0.015" -Bright Annealed  
-Mill Finish

1/2" Strapping 0.020" -Bright Annealed  
-Mill Finish  
-No Asbestos

3/4" Strapping 0.020" -Bright Annealed



### Stainless Steel FabStraps

Ideal Products' Fabstraps are made from T-304 Series Stainless Steel conforming to ASTM A-240 standards. Fabstraps are supplied at specific lengths with a wing seal attached, therefore ready to use. Fabstraps are cut to the right length every time, to help save time and money in the field when securing cladding and insulation in place. They are supplied in 1/2" and 3/4" widths.

### Stainless Steel Wing Seal

Stainless Steel Wing Seals are available in 1/2" and 3/4" widths. They are made from 0.025" thick, heavy duty 300 Series Stainless Steel.



### Stainless Steel Closed Seals

Stainless Steel closed seals are available in 1/2" and 3/4" widths. They are made from 0.025" thick heavy duty 300 Series Stainless Steel. Closed Seals are designed to be used for diameters of 8' and over. A standard seal tool is required for use with this particular seal. Closed seals ensure a stronger closure over wing seals on high tension or expansion spring applications.

### Stainless Steel Tie Wire

Ideal Products' Tie Wire is manufactured from T-304 Stainless Steel, and is available in both 16 and 18 gauge.



### Product Description

**Ideal Products** is able to custom fabricate Precision Cut Tees on our in-house CNC Cutting Equipment. This pre-fabrication saves time, labour and waste material by eliminating the need for on site fabrication.

Ideal's Precision Cut Tees are manufactured as two piece custom fabricated sections, and are available in sizes #1 - #32. Please see Page 14-F-2 for sizing and price information.

